

CULT COOKIN'!



A GAME BY INTERROBANG!

10 - 30 MINS

7+

VIRGIN MIMOSA STUDIOS

2 - 4 PLAYERS

CULT COOKIN' RULES

Why are these Cultists Cookin'?

Everybody's getting ready for the Equinox, and what's a better way to prepare than to make your offerings for the Great Old Ones? Play as 1 of 4 Cultists in a battle to satiate the hunger of the Great Old Ones.

How do I play?

To start a game, each player draws 5 cards from the Pantry.

Flip over the top card in the Great Old Ones pile. This acts as the Great Old One for this game that everyone is trying to appease.

The player who had their blood drawn most recently goes first, then the rest of the players take turns going clockwise.

In a turn, you draw 1 card from the Pantry, then play 1 card from your hand either into your dish or any opponent's dish.

Throughout the game's rounds, each card a player plays adds to their dish's Complexity number for the game. Some cards, specifically Utility cards, can modify cards which come before or after it. When an ingredient is modified its stats are completely replaced with the stats next to the icon for the Utility card that modified it.

There is a symbol on each card for which Utility cards can modify its score.

How do I play? (Cont.)

After 8 rounds have passed, the Equinox is upon us, and the Great Old One of the game is summoned.

The player whose dish's Complexity most closely matches that which the Great Old One desires wins the Great Old One card for the game. If two players are equally close to the Great Old One's desired dish complexity, whichever player has more cards of the Great Old One's preferred flavor wins the game.

Ending it All

Quick Play

In Quick Play, the game ends after 8 rounds have been played and the Great Old One has been appeased. The player who appeased the Great Old One is the game's winner.

The Gauntlet

In The Gauntlet, each Great Old One card acts as a point. The winner of the last game becomes the first player in the next game. The Gauntlet ends when there are no more Great Old Ones to appease. Players tally the number of Great Old Ones they have appeased to determine the winner.

Credits

Gregory Langenhorst
Gabe Cunningham
Ana Acosta

Beck Rivera
Lisa Merola

NYARLATHOTEP



-10 Those **Spicy** flavors which pain the humans so are the only ones Nyarlathotep desires.

THE KING IN YELLOW



10 The King watches from afar, and from his perch he desires the pain of **Spicy** foods.

CTHULHU



10 In his house at R'lyeh dead Cthulhu waits dreaming of **Savory** sustenance.

THE DWELLER IN THE GULF



9 The Dweller wishes to be fed the flavors which comfort him, **Umami** of the ocean.



**GREAT
OLD
ONES**

**GREAT
OLD
ONES**

**GREAT
OLD
ONES**

**GREAT
OLD
ONES**

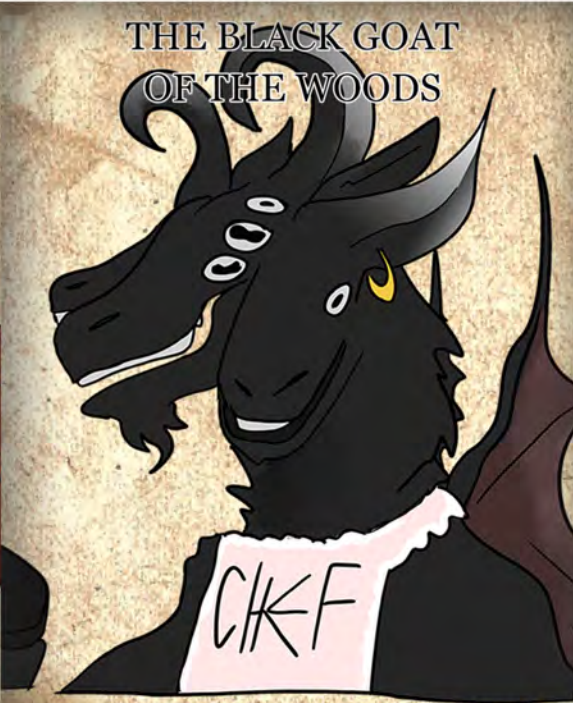
BASATAN



11

Basatan has traveled far, tasting many flavors, but none excite him quite like a **Sweet** treat.

THE BLACK GOAT OF THE WOODS



13

The Black Goat's **Sweet** tooth is insatiable, and thus she implores you satisfy it.

YOG-SOTHOTH



13

Yog-Sothoth knows all, and thus demands the little known flavors of **कहसलन**.

ABHOLOS



0

Abolos craves **Neutral** flavors, that which can be easily dissolved and added into his malice.



**GREAT
OLD
ONES**

**GREAT
OLD
ONES**

**GREAT
OLD
ONES**

**GREAT
OLD
ONES**

STARLKAN



12

From the depths of our collective minds, the Eternal Star arrives to taste **Umami** beautifully.

SPYORGETH



11

Only the **Salty** aroma of sodium can fill the void of Spyorgeth's ever-expanding stomach.

RAT TAIL



UMAMI



2

SPICY



1

SWEET & UMAMI

-1

RAT TAIL



UMAMI



2

SPICY



1

SWEET & UMAMI

-1

**GREAT
OLD
ONES**

**GREAT
OLD
ONES**

PANTRY

PANTRY

SKILLET



UTILITY

Modifies the ingredient
played last turn.



SKILLET



UTILITY

Modifies the ingredient
played last turn.



SKILLET



UTILITY

Modifies the ingredient
played last turn.



SKILLET



UTILITY

Modifies the ingredient
played last turn.



FRYER



UTILITY

Modifies the ingredient
played next turn.

1

FRYER



UTILITY

Modifies the ingredient
played next turn.

1

ICE CREAM MACHINE



UTILITY

Modifies both the ingredient
played last turn and the one
played next turn.

2

ICE CREAM MACHINE



UTILITY

Modifies both the ingredient
played last turn and the one
played next turn.

2

OVEN



UTILITY

Modifies the ingredient
played last turn.

O

OVEN



UTILITY

Modifies the ingredient
played last turn.

O

BLENDER



UTILITY

Modifies the ingredient
played next turn.

O

BLENDER



UTILITY

Modifies the ingredient
played next turn.

O

OVEN



UTILITY

Modifies the ingredient
played last turn.

O

OVEN



UTILITY

Modifies the ingredient
played last turn.

O

OVEN



UTILITY

Modifies the ingredient
played last turn.

O

OVEN



UTILITY

Modifies the ingredient
played last turn.

O

BLENDER



UTILITY

Modifies the ingredient
played next turn.

O

BLENDER



UTILITY

Modifies the ingredient
played next turn.

O

BLENDER



UTILITY

Modifies the ingredient
played next turn.

O

BLENDER



UTILITY

Modifies the ingredient
played next turn.

O

CHAMELEON TONGUE



SPICY



0

SALTY



1

UMAMI



2

SPICY

-1

CHAMELEON TONGUE



SPICY



0

SALTY



1

UMAMI



2

SPICY

-1

CHAMELEON TONGUE



SPICY



0

SALTY



1

UMAMI



2

SPICY

-1

CHAMELEON TONGUE



SPICY



0

SALTY



1

UMAMI



2

SPICY

-1

PLANTAIN



NEUTRAL



2

SAVORY



3

SWEET

0

PLANTAIN



NEUTRAL



2

SAVORY



3

SWEET

0

PLANTAIN



NEUTRAL



2

SAVORY



3

SWEET

0

PLANTAIN



NEUTRAL



2

SAVORY



3

SWEET

0

GARLIC



SAVORY



5

SAVORY

3

IPECAC



NEUTRAL



3

SWEET



5

NEUTRAL

-5

STRAWBERRY



SWEET



5

SWEET



3

ବଦାମି

4

MERCURY



SALTY



0

SWEET & SPICY

-5

AVOCADO



NEUTRAL



4

SAVORY

3

CHOCOLATE



SWEET



5

SWEET & SAVORY

4

FROG



SPICY



-5

ବଦାମି



3

UMAMI

-3

FROG



SPICY



-5

ବଦାମି



3

UMAMI

-3

EEL



UMAMI



-3

SALTY & UMAMI



4

UMAMI

2

EEL



UMAMI



-3

SALTY & UMAMI



4

UMAMI

2

TENTACLE?



ବଦାମନ



2

UMAMI

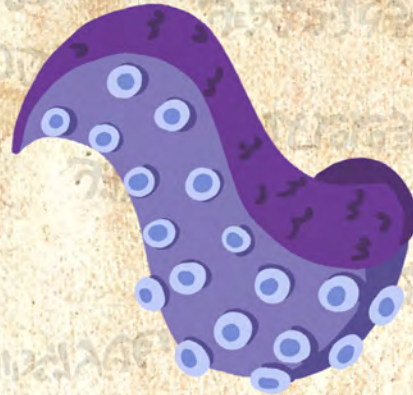


3

SPICY

-3

TENTACLE?



ବଦାମନ



2

UMAMI



3

SPICY

-3

WATER



NEUTRAL

0

WATER



NEUTRAL

0

DURIAN



SWEET



0

NEUTRAL



2

SWEET

-4

DURIAN



SWEET



0

NEUTRAL



2

SWEET

-4

UNWILLING SACRAFICE (JOHN)

UNWILLING SACRAFICE (JOHN)



SALTY

SALTY



-1

SALTY & SAVORY



-1

SALTY & SAVORY



3

SALTY



3

SALTY

1

1

FSH

FSH



UMAMI

UMAMI



1

SPICY



1

SPICY



2

କଟାକଟା



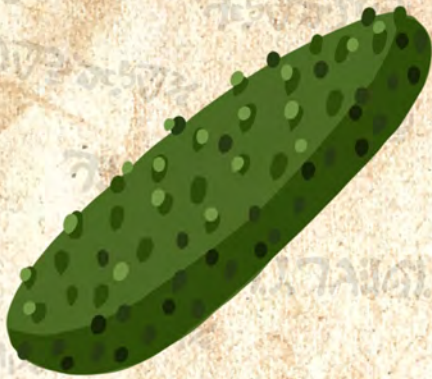
2

କଟାକଟା

-3

-3

PICKLE



SALTY



3

SALTY

2

PICKLE



SALTY



3

SALTY

2

CAROLINA REAPER



SPICY



5

UMAMI
& SPICY

3

CAROLINA REAPER



SPICY



5

UMAMI
& SPICY

3

CORPSE FLOWER



ବଦାମି



-2

SPICY

-4

CORPSE FLOWER



ବଦାମି



-2

SPICY

-4

FIIISH



ବଦାମି



-1

UMAMI



1

NEUTRAL



4

SPICY

-1

FIIISH



ବଦାମି



-1

UMAMI



1

NEUTRAL



4




SPICY

-1

UNIDENTIFIABLE BONES



କଟାକଟା

-  -3 SALTY
-  -1 SPICY
-  2 କଟାକଟା & UMAMI
- 1

UNIDENTIFIABLE BONES






କଟାକଟା

-  -3 SALTY
-  -1 SPICY
-  2 କଟାକଟା & UMAMI
- 1

FIIISH



କଟାକଟା

-  -1 UMAMI
-  1 NEUTRAL
-  4 SPICY
- 1

UNIDENTIFIABLE BONES



କଟାକଟା

-  -3 SALTY
-  -1 SPICY
-  2 କଟାକଟା & UMAMI
- 1



RIGATONI



NEUTRAL



0

NEUTRAL



4

SALTY

1

RAW EGG



NEUTRAL



2

SAVORY



1

NEUTRAL

-2

RIGATONI



NEUTRAL



0

NEUTRAL



4

SALTY

1

RIGATONI



NEUTRAL



0

NEUTRAL



4

SALTY

1

RAW EGG



NEUTRAL



2

SAVORY



1

NEUTRAL

-2

RAW EGG



NEUTRAL



2

SAVORY



1

NEUTRAL

-2

MEALWORMS



UMAMI



0

କଟାକଟା
& UMAMI



4

SAVORY

-3

MEALWORMS



UMAMI



0

କଟାକଟା
& UMAMI



4

SAVORY

-3

GORGONZOLA



SAVORY



-3 SAVORY



2 SAVORY

1

GORGONZOLA



SAVORY



-3 SAVORY



2 SAVORY

1

MEALWORMS



UMAMI



0 טעם ארומה & UMAMI



4 SAVORY

-3

GORGONZOLA



SAVORY



-3 SAVORY



2 SAVORY

1

